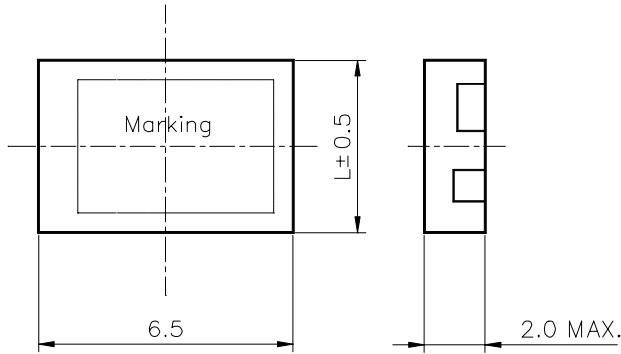


SPECIFICATION OF DIELECTRIC FILTER

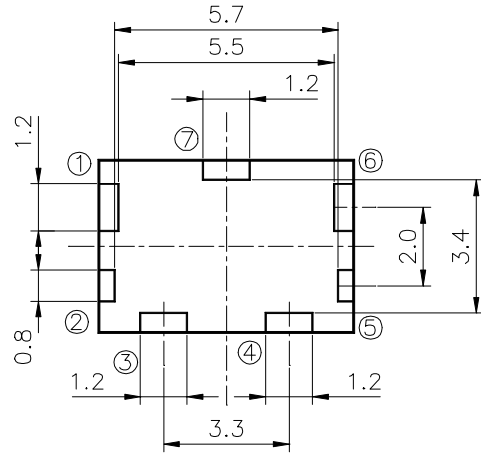
TOKO P/No: TDFM1B-1880L-11

1. OUTLINE DIMENSION



L=4.4

△ Marking: B 1880-11
TOKO



①	GND	⑤	IN
②	OUT	⑥	GND
③	GND	⑦	GND
④	GND		

tolerance: ± 0.3
unit : mm

2. ELECTRICAL CHARACTERISTICS

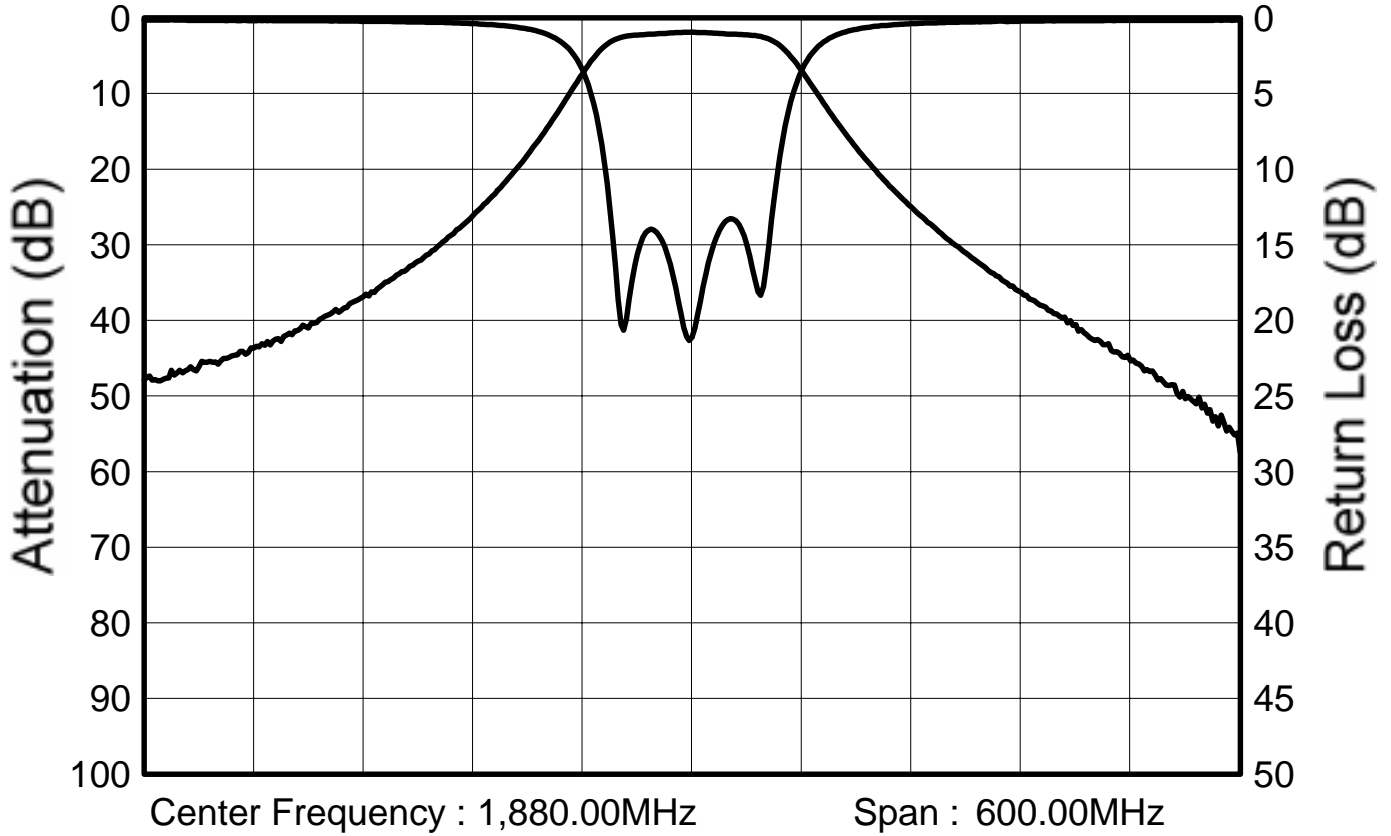
	SPECIFICATION
CENTER FREQUENCY (Fo)	: 1880.0 MHz
PASS BAND WIDTH	: Fo ± 30.0 MHz
INSERTION LOSS IN PASS BAND	: 3.0 dB max. (-30°C ~ +50°C)
	: 3.2 dB max. (-30°C ~ +85°C)
RIPPLE IN PASS BAND	: 1.0 dB max.
V.S.W.R IN PASS BAND	: 2.0 max.
ATTENUATION	
at 1640.0 MHz	: 39.0 dB min.
at 1690.0 MHz	: 34.0 dB min.
at 2070.0 MHz	: 34.0 dB min.
at 2120.0 MHz	: 39.0 dB min.
IN/OUT IMPEDANCE	: 50 ohm

(All specifications are an absolute value.)

1st.	1996-07-04	E.Tanaka
Orig.	1996-06-16	Y.Yamada
Issues		Sig.

Test Data of Dielectric Filter

Toko No. : TDFM1B-1880L-11



Passband Insertion Loss	2.27dB
Passband Ripple	0.37dB
Passband V.S.W.R.	1.55
Attenuation	
at 1,640.00MHz	43.68dB
at 1,690.00MHz	38.31dB
at 2,070.00MHz	37.92dB
at 2,120.00MHz	45.36dB

Date : 96.02.22

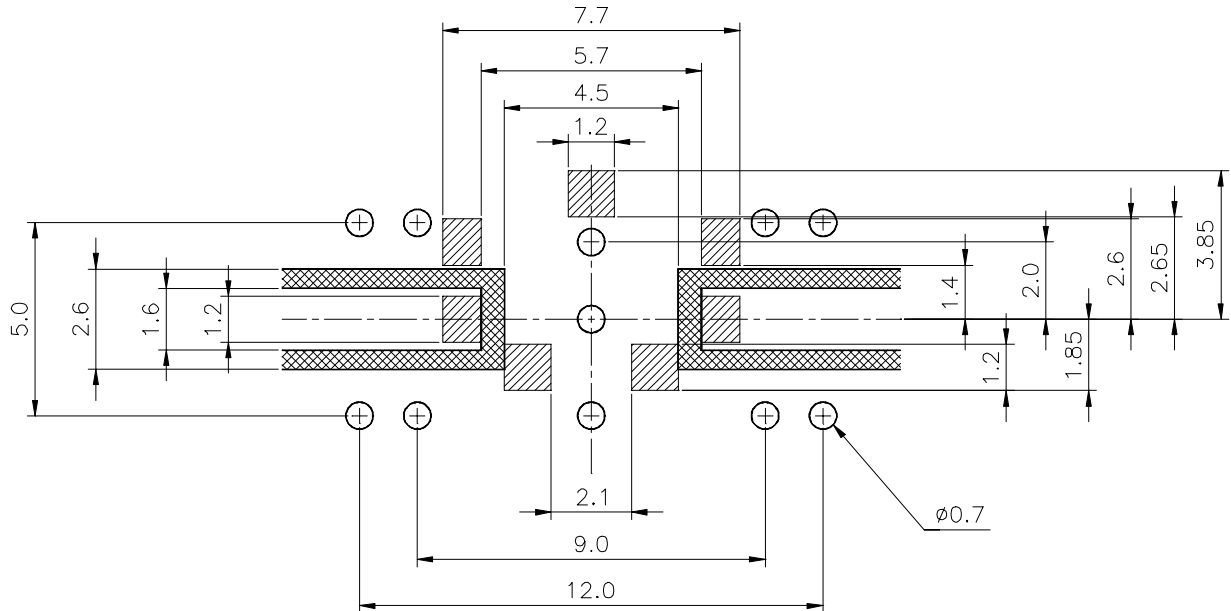
Instrument : WILTRON 37269A




Toko, INC.

PCB Recommended Pattern For Dielectric Filter

TOKO P/No : TDFM1B-1880L-11



 Parts of not coppered.
(Other parts are coppered)

 Soldering parts.

Back plane is all coppered.
All holes are plated-through holes.

SUBSTRATE MATERIAL:

BT Resin CCL-H870 t=0.9mm.

CCL-H870's typical dielectric constant is 3.6 at 1GHz.

CAUTION:

All terminals of this filter are connected to GND.

Therefore, it must be used without DC voltage.